

## The Spark Cash Index

Release version: May 2010

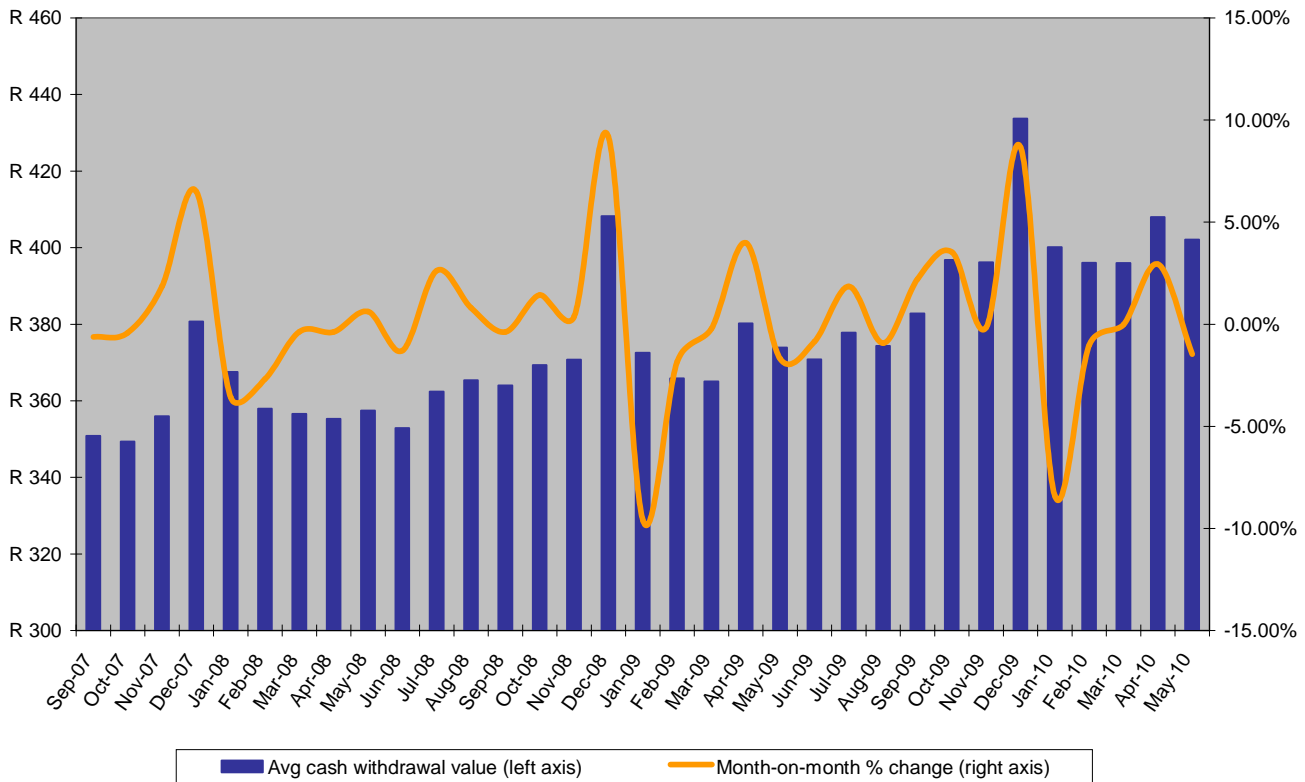
### About Spark ATM Systems

Spark ATM Systems is South Africa's leading independent ATM provider, deploying convenience Automated Teller Machines ('ATMs') in retail, convenience and hospitality locations across South Africa.

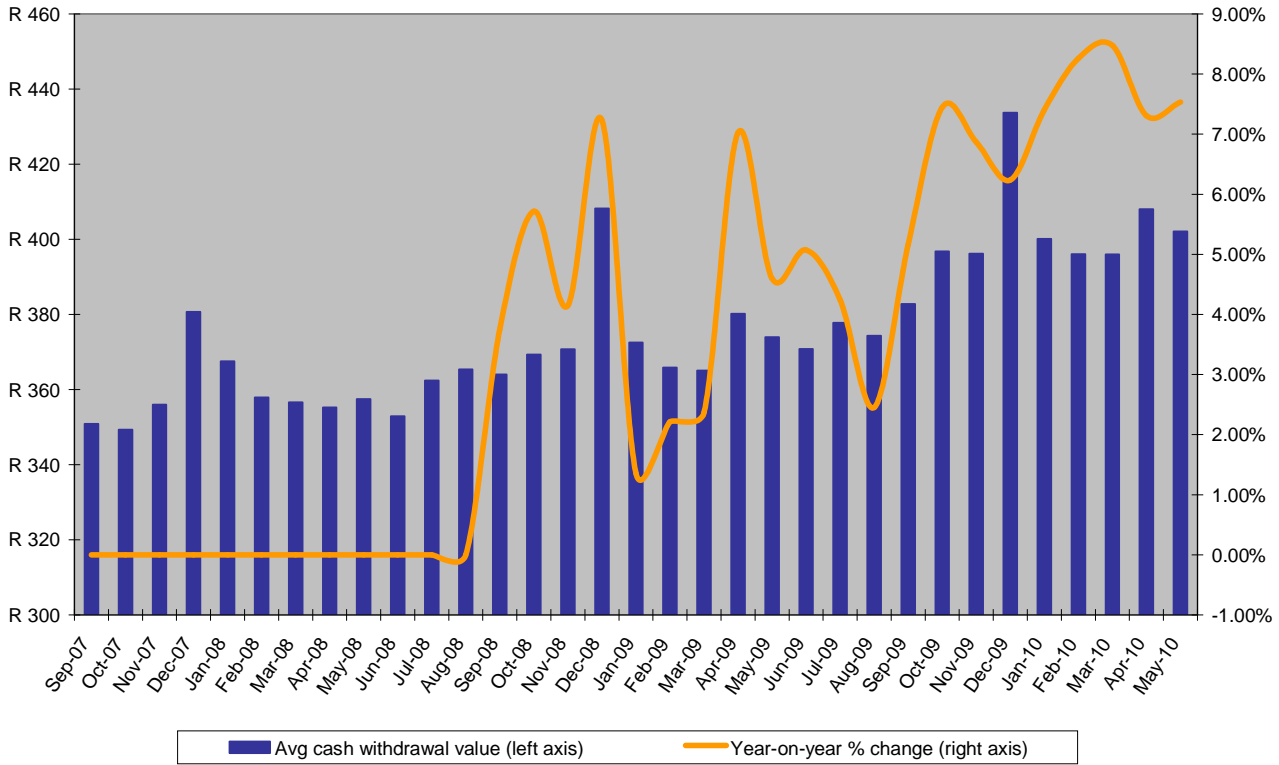
### Introduction to the Spark Cash Index

The amount of cash withdrawn at ATMs is a real-time indicator of cash availability and consumer spending in the economy. From our records we have noticed that over time the average amount of cash withdrawn at our network of ATMs corresponds with general economic conditions in the country. We have also seen that consumers vary the amount of cash they withdraw based on prevailing economic conditions, particularly variations in the prime interest rate.

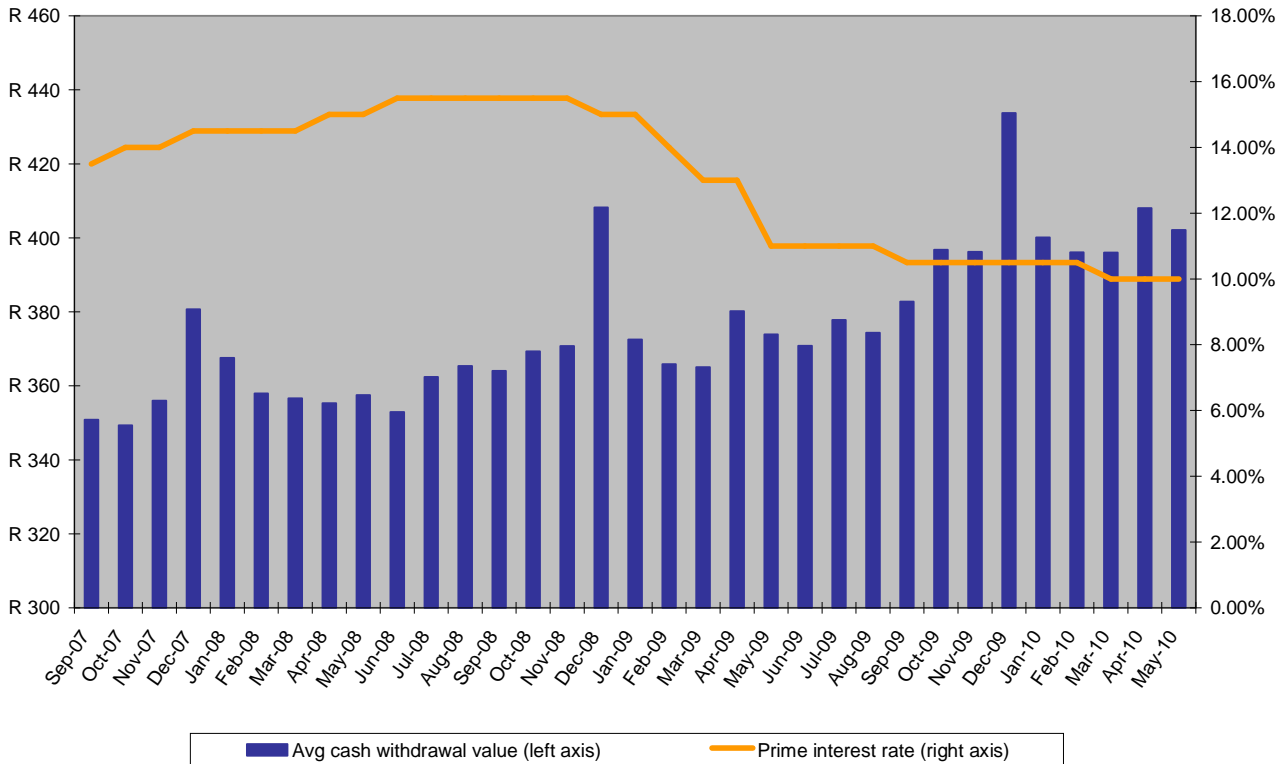
**Graph A**  
**Average cash withdrawal value**



**Graph B**  
**Average cash withdrawal change year-on-year**



**Graph C**  
**Avg cash withdrawal value vs Prime interest rate**



## Data Table

Month	Avg Cash Withdrawal	Month on Month Change	Year on Year Change	Prime Interest Rate
Sep-07	R 351	-0.62%	N/A	13.50%
Oct-07	R 349	-0.43%	N/A	14.00%
Nov-07	R 356	1.86%	N/A	14.00%
Dec-07	R 381	6.49%	N/A	14.50%
Jan-08	R 368	-3.58%	N/A	14.50%
Feb-08	R 358	-2.69%	N/A	14.50%
Mar-08	R 357	-0.37%	N/A	14.50%
Apr-08	R 355	-0.38%	N/A	15.00%
May-08	R 357	0.62%	N/A	15.00%
Jun-08	R 353	-1.30%	N/A	15.50%
Jul-08	R 362	2.63%	N/A	15.50%
Aug-08	R 365	0.81%	N/A	15.50%
Sep-08	R 364	-0.37%	3.76%	15.50%
Oct-08	R 369	1.43%	5.72%	15.50%
Nov-08	R 371	0.38%	4.15%	15.50%
Dec-08	R 408	9.19%	7.23%	15.00%
Jan-09	R 373	-9.58%	1.36%	15.00%
Feb-09	R 366	-1.83%	2.22%	14.00%
Mar-09	R 365	-0.22%	2.37%	13.00%
Apr-09	R 380	3.98%	7.02%	13.00%
May-09	R 374	-1.68%	4.60%	11.00%
Jun-09	R 371	-0.84%	5.07%	11.00%
Jul-09	R 378	1.85%	4.24%	11.00%
Aug-09	R 374	-0.92%	2.45%	11.00%
Sep-09	R 383	2.21%	5.16%	10.50%
Oct-09	R 397	3.53%	7.44%	10.50%
Nov-09	R 396	-0.16%	6.87%	10.50%
Dec-09	R 434	8.65%	6.24%	10.50%
Jan-10	R 400	-8.40%	7.40%	10.50%
Feb-10	R 396	-1.02%	8.26%	10.50%
Mar-10	R 396	0.00%	8.47%	10.00%
Apr-10	R 408	2.94%	7.31%	10.00%
May-10	R 402	-1.47%	7.53%	10.00%

## Commentary

During the month of May 2010, the average value of cash withdrawn was R402 per withdrawal, showing a 1.47% decrease from April 2010, but a 7.53% increase from the this time last year in May 2009. To date, R402 is the third highest value recorded in the Spark Cash Index.

May normally reflects a slight dip from April, which contains the seasonal Easter spike, so this performance is consistent with previous years. The increase of 7.53% is the fifth month in a row with 7%-plus increases, indicating that consumers have continued to withdraw larger values of cash well into 2010.

With CPI now contained within its target range, it is of particular interest that the Cash Index increase is still more than CPI, indicating that consumers are positive and therefore withdrawing higher levels of cash than inflationary changes require. This matches other positive data emerging in the economy and it bodes well for a recovery in the retail sectors.

## Explanatory Notes

The value for the Spark Cash Index value is obtained using the following formula: Cash dispensed for the month divided by cash withdrawals for the month across a selection of Spark ATM's network of ATMs. The sample size is hundreds of thousands of transactions in both urban and rural areas across all nine provinces of South Africa, therefore representing a very good cross section of South African consumers.

The data presented is raw data and has not been adjusted for seasonality or for the effects of inflation.

## Contact Details

Marc Sternberg  
Managing Director, Spark ATM Systems

Tel: +27 21 418 3330  
Email: [marc@sparkatm.co.za](mailto:marc@sparkatm.co.za)  
Website: [www.sparkatm.co.za](http://www.sparkatm.co.za)

## Disclaimer

Every effort is expended in an endeavour to ensure accuracy in the presentation of this information. The information is derived from accurate and reliable sources. However, Spark ATM Systems (Pty) Ltd is not responsible for the consequences of any actions or losses resulting from reliance on this information or publication and urges readers to seek detailed advice and to exercise caution in their decision making.

© copyright