

# The Spark Cash Index

Release version: June 2010

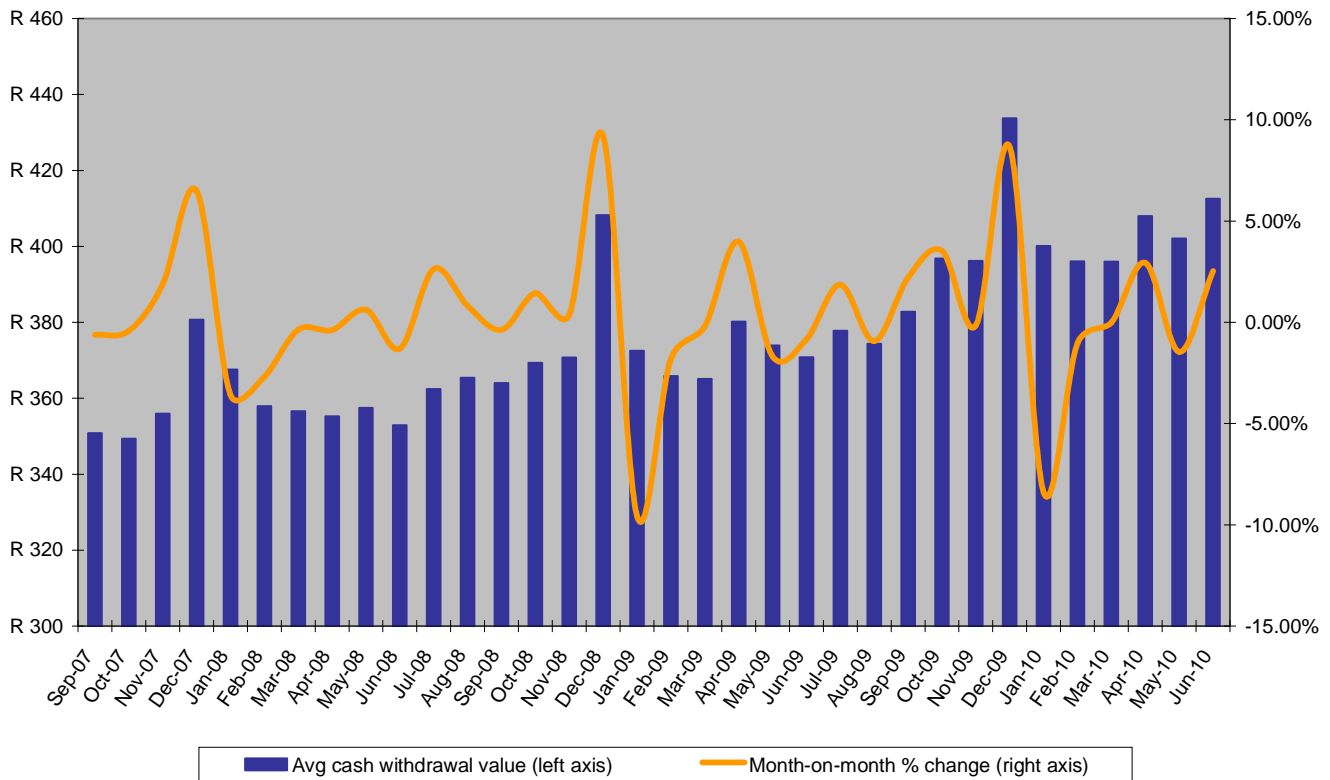
## About Spark ATM Systems

Spark ATM Systems is South Africa's leading independent ATM provider, deploying convenience Automated Teller Machines ('ATMs') in retail, convenience and hospitality locations across South Africa.

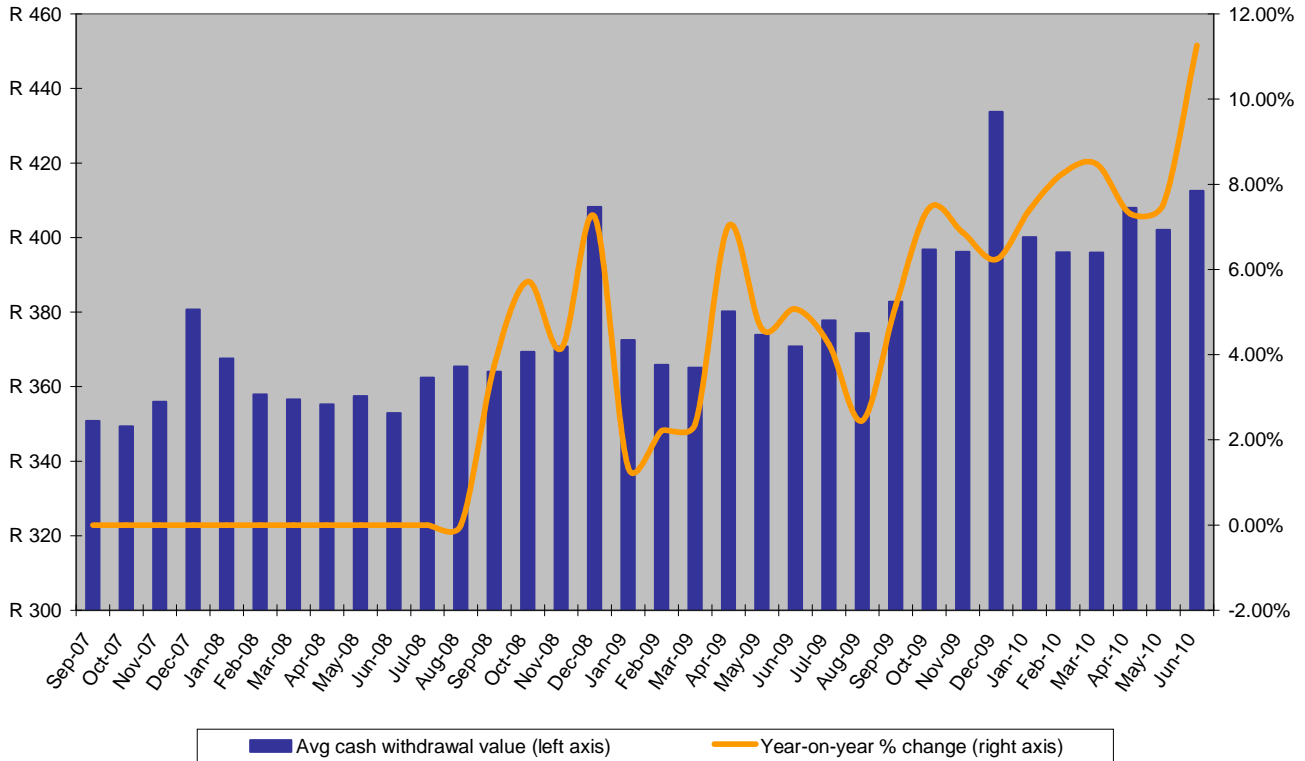
## Introduction to the Spark Cash Index

The amount of cash withdrawn at ATMs is a real-time indicator of cash availability and consumer spending in the economy. From our records we have noticed that over time the average amount of cash withdrawn at our network of ATMs corresponds with general economic conditions in the country. We have also seen that consumers vary the amount of cash they withdraw based on prevailing economic conditions, particularly variations in the prime interest rate.

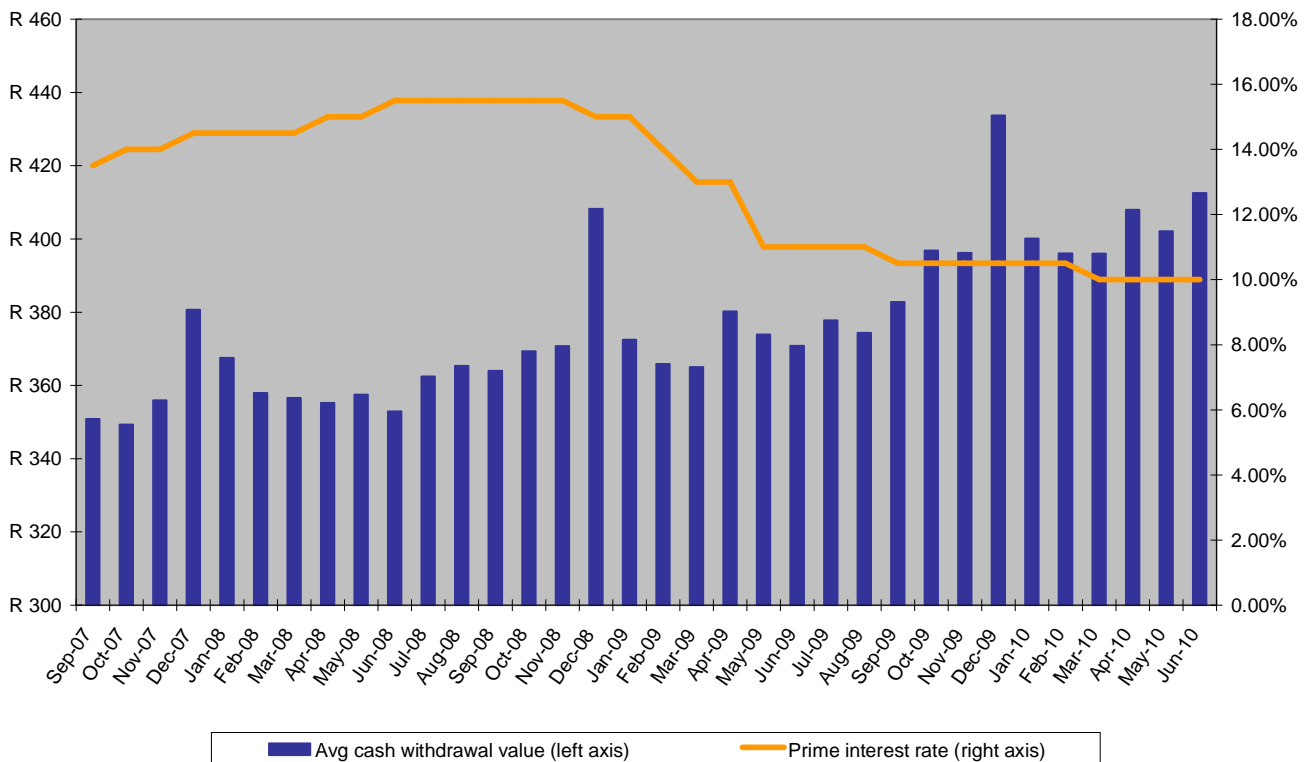
**Graph A**  
**Average cash withdrawal value**



**Graph B**  
**Average cash withdrawal change year-on-year**



**Graph C**  
**Avg cash withdrawal value vs Prime interest rate**



## Data Table

Month	Avg Cash Withdrawal	Month on Month Change	Year on Year Change	Prime Interest Rate
Sep-07	R 351	-0.62%	N/A	13.50%
Oct-07	R 349	-0.43%	N/A	14.00%
Nov-07	R 356	1.86%	N/A	14.00%
Dec-07	R 381	6.49%	N/A	14.50%
Jan-08	R 368	-3.58%	N/A	14.50%
Feb-08	R 358	-2.69%	N/A	14.50%
Mar-08	R 357	-0.37%	N/A	14.50%
Apr-08	R 355	-0.38%	N/A	15.00%
May-08	R 357	0.62%	N/A	15.00%
Jun-08	R 353	-1.30%	N/A	15.50%
Jul-08	R 362	2.63%	N/A	15.50%
Aug-08	R 365	0.81%	N/A	15.50%
Sep-08	R 364	-0.37%	3.76%	15.50%
Oct-08	R 369	1.43%	5.72%	15.50%
Nov-08	R 371	0.38%	4.15%	15.50%
Dec-08	R 408	9.19%	7.23%	15.00%
Jan-09	R 373	-9.58%	1.36%	15.00%
Feb-09	R 366	-1.83%	2.22%	14.00%
Mar-09	R 365	-0.22%	2.37%	13.00%
Apr-09	R 380	3.98%	7.02%	13.00%
May-09	R 374	-1.68%	4.60%	11.00%
Jun-09	R 371	-0.84%	5.07%	11.00%
Jul-09	R 378	1.85%	4.24%	11.00%
Aug-09	R 374	-0.92%	2.45%	11.00%
Sep-09	R 383	2.21%	5.16%	10.50%
Oct-09	R 397	3.53%	7.44%	10.50%
Nov-09	R 396	-0.16%	6.87%	10.50%
Dec-09	R 434	8.65%	6.24%	10.50%
Jan-10	R 400	-8.40%	7.40%	10.50%
Feb-10	R 396	-1.02%	8.26%	10.50%
Mar-10	R 396	0.00%	8.47%	10.00%
Apr-10	R 408	2.94%	7.31%	10.00%
May-10	R 402	-1.47%	7.53%	10.00%
June-10	R 413	2.54%	11.26%	10.00%

## Commentary

During the month of June 2010, the average value of cash withdrawn was R413 per withdrawal, representing an 11.26% increase over June 2009 and a 2.54% increase from the previous month of May 2010. To date, R413 is the second highest value recorded in the Spark Cash Index, second only to the Dec 2009 spike of R434. The annual increase of 11.26% is the highest annual increase on record.

June does not traditionally show such a large increase over May and it is apparent that the FIFA Soccer World Cup fever that has gripped the country, together with the extended school holidays, have contributed to this unusual spike. This mid-year 'December binge' may well be followed by lower values being recorded in July and August as consumers recover from this increased spending.

The FIFA World Cup has also resulted in an increase in foreigners to South Africa and this has been demonstrated by the resulting ATM usage. The portion of foreign card usage for June 2010 increased by 52% over the same period last year, with foreign withdrawals comprising 8% of transactions, up from 5% in June 2009. The average foreign withdrawal value over the first 3 weeks of the tournament was R687, which is significantly more than what South Africans are withdrawing and 26% more than the average value foreigners recorded in June 2009.

## Explanatory Notes

The value for the Spark Cash Index value is obtained using the following formula: Cash dispensed for the month divided by the number of cash withdrawals for the month across a selection of Spark ATM's network of ATMs. The sample size is hundreds of thousands of transactions in both urban and rural areas across all nine provinces of South Africa, therefore representing a very good cross section of South African consumers.

The data presented is raw data and has not been adjusted for seasonality or for the effects of inflation.

## Contact Details

Marc Sternberg  
Managing Director, Spark ATM Systems

Tel: +27 21 418 3330  
Email: [marc@sparkatm.co.za](mailto:marc@sparkatm.co.za)  
Website: [www.sparkatm.co.za](http://www.sparkatm.co.za)

## Disclaimer

Every effort is expended in an endeavour to ensure accuracy in the presentation of this information. The information is derived from accurate and reliable sources. However, Spark ATM Systems (Pty) Ltd is not responsible for the consequences of any actions or losses resulting from reliance on this information or publication and urges readers to seek detailed advice and to exercise caution in their decision making.

© copyright